

## Sponsors

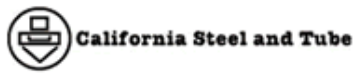


South Coast Air Quality  
Management District

**EGK** Foundation



Haddick's  
TOWING & AUTO BODY



Bridge Foundation  
David and Judith McCarroll  
Ken Koch  
Hacienda Heights Kiwanis  
HLPUSD Board members

Industry Hills Rotary Foundation  
K & W Engineering  
KTA Services  
Reinholt  
Starnet Listing Broker Inc.

Brad Boyle  
Dave Rutherford  
Debbie Pearson  
Dickie Simmons  
Don and Betty White  
Don Knabe  
Dr. and Mrs. Shelton  
Gary Edward  
Laurie Marshall  
Robin Chen  
Ron Ketchem  
Thomas Knipe

General Sealants, Inc.  
City of Industry Lion's Club  
California Steel and Tube  
Los Angeles Deputy  
Former Principal of LAHS  
Administration  
Cal Poly Pomona  
Stud Welding System Inc.  
Haddick's  
Vivid Internet Production  
AQMD  
Edison Electric Transportation

## Sponsors

Arnie Maldonado  
Arthur Chang  
Bernie D. Fleming  
Betty Jean Thiesseu  
Bo Istrate  
Bob Yamasaki  
Brian J. Yu  
Brian Keirns  
Carolun Ramirez  
Charles Curnutt  
Daniel and Illona Jurado  
Dave Wallach  
David Kuo  
E. Nakamura  
Erika Woo  
Guy Schindler  
Halley Smith  
Hinojosa Family  
Jacob Christ  
James E. Johnson Ed. D.  
James Lu  
James R. Ganger  
Jim Watson  
John Kramer  
Judy Price  
Karen Shumaker  
Kathy Mota  
Ken Koch  
Laura Oyster  
Marcella Jackson  
Mary Ann King  
Melvyn Sarthou  
Michael McCarroll  
Mike Merchant  
Mitch Kodama  
Nikki Kodama  
Oscar Juarez  
Patricia Miller  
Patty Higgins  
Rae-Shae Chen  
Ray Dean  
Richard Kraft  
Ron Biang  
Sandra R. Johnson  
Shaun M. Yzquierdo  
Steve Kang  
T. Huddle  
Tim Chow  
Tran Hoang  
Pat McIntosh

Los Altos High School  
Cerner Corp.  
Los Altos High School (retired)  
Donor  
Northrop Grumman (alumni)  
Bytops Sign Inc.  
MSN Microsoft Corp.  
Brimar Products  
Puente Hills Marketing Department  
American Honda  
Parent (alumni)  
Asbestos, Environment & Safety  
Carrier  
Los Altos High School  
JPL (alumni)  
Airtech  
TechTV  
Parent  
Pontech Inc.  
Former Superintendent HLPUSD  
G.E. (alumni)  
Los Altos High School  
Los Altos High School (retired)  
Former Superintendent HLPUSD  
Los Altos High School  
Los Altos High School  
Toyota Motor Sales  
KTA Service, Inc.  
Los Altos High School  
La Puente Valley ROP  
La Puente Valley ROP  
La Puente Valley ROP (retired)  
HP Pavilion Sharks Hockey Team  
Kaiser Permanente  
Former Engineer  
Northrop Grumman  
AC Propulsion (alumni)  
LA Puente Valley ROP  
Los Altos High School  
Los Altos High School  
Los Altos High School (retired)  
Los Altos High School (retired)  
LA Puente Ready Mix  
Board Member HLPUSD  
Toyota  
Boeing (alumni)  
Los Altos High School  
SyncGear Incorporated  
Los Altos High School  
Bridge Foundation

If you would like to make a donation  
e-mail us at [laae.pr@gmail.com](mailto:laae.pr@gmail.com) or  
please call (626) 330-1096 .



H<sub>2</sub> FUEL CELL VEHICLE

**Los Altos High School**  
15325 E. Los Robles Avenue  
Hacienda Heights, CA 91745

Phone: (626) 330-1096

Fax: (626) 961-2153

Internet: [www.lasv.org](http://www.lasv.org)

### Advisors

Bob Franz : [RFranz@hlpusd.k12.ca.us](mailto:RFranz@hlpusd.k12.ca.us)  
Mike Keirns : [MKeirns@hlpusd.k12.ca.us](mailto:MKeirns@hlpusd.k12.ca.us)  
Ed Richter : [ERichter@hlpusd.k12.ca.us](mailto:ERichter@hlpusd.k12.ca.us)

# Building a cleaner, more fuel efficient tomorrow

## LAAE INFUSION TEAM



## HISTORY OF THE INFUSION

*Infusion*, first developed in 2001, is the first student designed and built hydrogen fuel Cell Vehicle in the United States. The goal of *Infusion* is to travel 40 miles per hour for one hour continuously. Founded in 1989, the Los Altos Academy of Engineering has a legacy of building electric and solar vehicles. The mission of the Los Altos Academy of Engineering is to establish opportunities in mathematics, science, computer science, and engineering for students who demonstrate an early interest in these career fields.

## HYDROGEN TECHNOLOGY

*Infusion* uses a complex system of regulators and valves to store ultra-pure hydrogen to run the Ballard fuel cell. The hydrogen in the vehicle is stored in metal-hydride tanks which contain pellets that react with hydrogen gas. Three metal-hydride tanks are used in *Infusion*. The tanks store hydrogen as a semi-solid slush at a low pressure. That allows the program to fill the tanks on site.



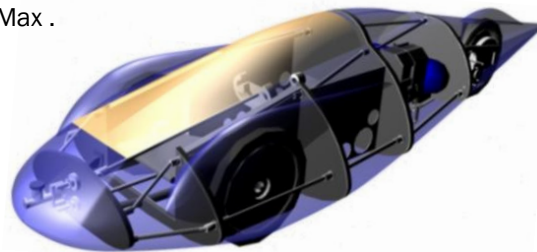
## COMPOSITES

*Infusion's* body was constructed at Cerritos College by the LAAE composites team. The bottom half of the actual body was made using a wet lay up technique. The top half of the body was made using an environmentally-friendly state of the art technique called, coincidentally, infusion impregnation to produce an extremely light and strong body. Mr. Terry Price of the Cerritos Composite Program worked with our composites team to perfect this process. It took two years and four attempts to get a body that met the weight and structural requirements. The Air Craft windshield Company formed the canopy from molds made by the team.



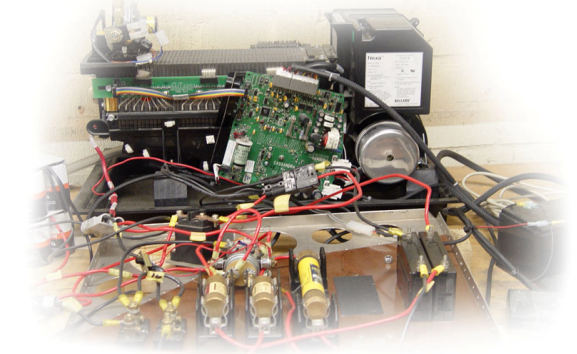
## DESIGN

The designers of *Infusion* intended the vehicle to be innovative in every way. In addition to the use of hydrogen fuel cell technology, the body of *Infusion* is unique in that it mimics the shape of a raindrop in order to minimize air resistance. Other elements of the vehicle, including the sheet aluminum cockpit and torsion bar suspension, produce an interesting mix of technology in *Infusion*. The primary programs used in its design were AutoCAD and Rhino. The program used to texture and rendered the car for display was 3Ds Max .



## ELECTRICAL

*Infusion's* electrical system consists of four main components: the fuel cell, the batteries, the motor, and the motor controller. A Ballard fuel cell is used with a back-up system of a 24volt battery pack to power *Infusion*. The fuel cell puts out only 400 watts of power, similar to that of a hairdryer. It is connected to a 1.2 horsepower Scott motor, which in turn is hooked to a Curtic motor controller. If at any time the fuel cell fails, the batteries provide the needed power.



## MECHANICAL

*Infusion* is a three-wheeled vehicle with a carbon-steel chassis and bulkheads made out of aluminum and Nomex honeycomb composite material. The front suspension of the vehicle is composed of dual A-arms wrapped around torsion bars. The rear suspension is composed of a swing-arm and a single bicycle damper. The rear wheel of the vehicle is driven by a belt from the motor.

